



GALLERY COURT

UNCOMMON LUXURY, UNCOMMON PLACE

Discriminating buyers of condominium homes will soon see their hopes realized with the appearance of Gallery Court, in the heart of the Nation's Capital.

Located just off Sussex Drive on Murray Street, around the corner from Ottawa's Mile of History, distinctive condominium homes will occupy a historic and strategic position; remarkably convenient to Ottawa's major attractions.

Jointly developed by Timberlay and Citicom, Gallery Court homes combine superb design and the highest standard of construction, materials and finishing.

Unquestionably a complement to the handsome and historic character of the location, Gallery Court will occupy a commanding presence that will enhance the many-pleasant features of modern downtown living.



GALLERY COURT

Preserving the architectural integrity of the surrounding environment is a priority with the Timberlay/Citicom project team. Extraordinary care has been given to every aspect of design, every detail of construction.

Ottawa's rich architectural heritage will be reflected fully in the comprehensive quality of Gallery Court homes.

Together, Timberlay and Citicom bring a wealth of experience to this distinctive and exciting project — a truly modern inner-city habitat.

The combined portfolio of these two, complementary firms contains an array of prize-winning and eminently successful developments. In Ottawa, Timberlay projects include Brown's Inlet, Echo-Rosedale, Beechwood Village and Rockcliffe-on-the-Lake. Citicom has the resources and versatility necessary to build the Rideau Centre — one of the largest multi-use complexes of its type in North America. Together, these constitute an enviable record of achievement and indicate a range of expertise that simply cannot be matched.

Timberlay and Citicom consistently achieve the dual qualities that are necessary in the best homes: quality of living and quality of investment.



And surely a sense of security and well-being will flow from these inherent qualities. Security in knowing that an investment in one of the best-built, best-located homes in the entire capital region is a good investment. Well-being in knowing that you can put your feet up in a superbly crafted home with the knowledge that the ground and environment surrounding you are part of Ottawa's history; and knowing that countless activities in your vicinity are but a few steps away.



Ottawa is particularly fortunate in that, being the Nation's Capital, it is the home of many national treasures.

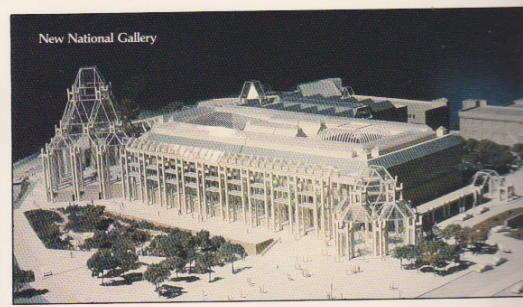
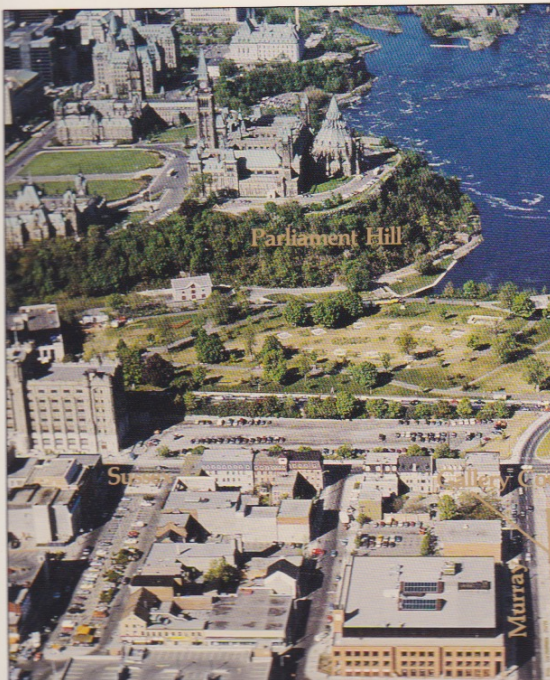
Imagine walking to the National Gallery to appreciate the finest of Canada's art treasures, or to the National Arts Centre to appreciate the world's finest artists perform music, theatre and ballet. Stroll to Nepean Point to marvel at the promontory of the Gatineau Hills beyond the Ottawa River.

Jog, walk, or bicycle through N.C.C. parkland; skate or toboggan at the Governor General's Residence;

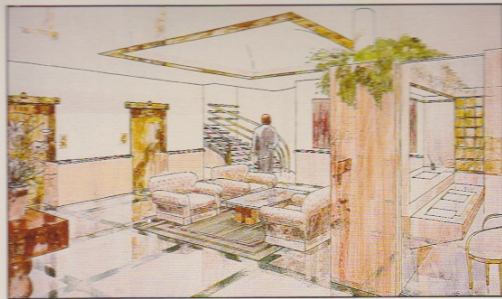
show guests Embassy Row, Earncliffe, the Archbishop's Palace and the Prime Minister's Residence. Walk to Parliament Hill and the Chateau Laurier.

Shop at the Rideau Centre, along Sussex Drive and the Byward Market. Enjoy a candlelight dinner one minute from your home. Stock your kitchen with fresh fruit, vegetables, fish, poultry and meat. Try on Haute Couture fashions. Buy art or sculpture.

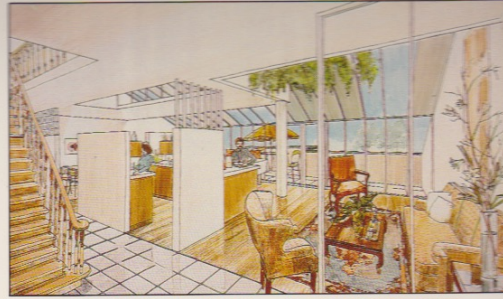
Live in the most desirable location in Ottawa. Uncommon luxury. Uncommon place.



New National Gallery



CONDOMINIUM LOBBY — ARTIST'S CONCEPT



CONDOMINIUM INTERIOR — ARTIST'S CONCEPT

The Timberlay/Citicom Gallery Court project team places a high premium on quality. Because we know that the residents of Gallery Court are not given to compromise.

Inside, every Gallery Court home is unique — and yet shares the best of everything: finishing cabinetry, hardware, tiling, broadloom, fixtures and appliances.

Exterior stone and glass envelop the exteriors and set off the classic proportions of Gallery Court. Carefully manicured and maintained landscaping completes the seamless integration of Gallery Court with its historic neighbourhood.

GALLERY COURT IN THE MARKET AREA
OTTAWA, CANADA

